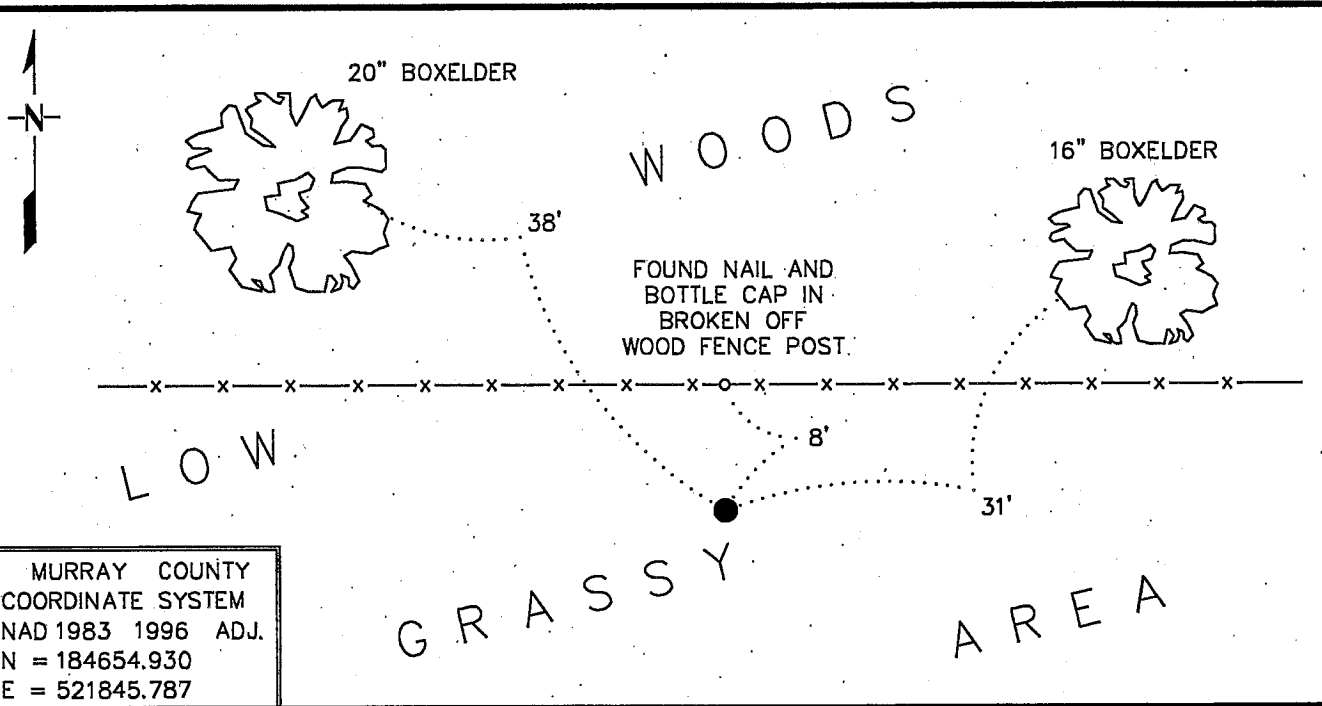


CERTIFICATE OF LOCATION OF GOVERNMENT CORNER

NORTHEAST Corner of Section 18, Township 107 N, Range 40 W
5th Principal Meridian, State of Minnesota, County of MURRAY

At the corner location shown on the sketch:

- On 10/13/09 found a 1 1/4" DIAMETER X 14' LONG IRON PIPE, DOWN 12"
DATE
- left monument as found, lowered monument, removed monument (explain)
- On 10/13/09 Placed a 3/4" X 24" REBAR WITH A PLASTIC CAP STAMPED
DATE
"MN DNR LS 17003". FLUSH, IN CENTER OF FOUND IRON PIPE



MURRAY COUNTY
 COORDINATE SYSTEM
 NAD 1983 1996 ADJ.
 N = 184654.930
 E = 521845.787

Statement of evidence for this corner location is on back of this page. 11/02/09
WMA01426.00.00.01

I certify that this document was researched and prepared by me or under my direct supervision.

SIGNATURE Bruce W. Shippert DATE 11/04/09 License Number 17003

Title: Land Surveyor Professional Engineer County Surveyor County Engineer

The DNR Division of Lands and Minerals contacted the following for survey information:

Minnesota History Center in St. Paul
Murray County Recorder's Office
Murray County Highway Engineer's Office
Bueltel-Moseng Land Surveying of Marshall
Zieske Land Surveying, Inc. of Windom
Madsen Land Surveying, Inc. of Fairmont
Bonnema Surveys of Willmar

1861 U.S. General Land Office notes, obtained from the Minnesota History Center, show the corner as follows:

“Set $\frac{1}{4}$ Sec Cor P & M “

1928 April 17, Surveyor's Record Book, obtained from the County Highway Engineer's Office, contains a survey in the Northeast Quarter of Section 18, surveyor not indicated. Survey shows corner but a description of what kind of monument was found or set is not given and no distances are shown to it.

1928 April 17, Surveyor's Record Book, obtained from the County Highway Engineer's Office, contains a survey in the Northwest Quarter of Section 17, surveyor not indicated. Survey shows corner but a description of what kind of monument was found or set is not given and no distances are shown to it.

No Surveyor's Record Book, obtained from the County Highway Engineer's
Date Office, contains a survey in the Section 17, surveyor not indicated. Survey shows corner but a description of what kind of monument was found or set is not given and no distances are shown to it.

On April 3, 1935, the following note about the north $\frac{1}{6}$ corner of the NW $\frac{1}{4}$ of Section 17 was added:

“found iron stake placed concrete stone, tack in brace post, northeast
39.85 feet”

No distances are show to the $\frac{1}{16}$ corner.

1956 December 15, a Topographic Map/Ownership Map prepared by the DNR Division of Waters of the outlet of Des Moines River, in the possession of the DNR Division of Lands and Minerals, shows corner but a description of what kind of monument was found or set is not given and no distances are shown to it. The corner is shown:
in line with a north-south fence north

1970 October, the DNR Bureau of Engineering consulted with Mike Anders, who farms the NE $\frac{1}{4}$ of Section 18, for testimony regarding this corner and obtained the following:

“there had been so much fooling around with the northeast corner that no one but God knows where it is now”

Also, consulted with Mr. Vogel, whose land is in the SW $\frac{1}{4}$ of Section 8, for testimony regarding this corner and obtained the following:

“he has no idea where the corner should be”

1973 May 3, the DNR Bureau of Engineering conducted a survey in the NW $\frac{1}{4}$ of Section 18 and established the corner as follows:

on the southerly extension of a north-south fence which starts about 400 feet north of the area of the corner AND on the westerly extension of a line from the northeast corner of Section 17 thru the north quarter corner of Section 17

A 1 inch iron pipe was set, flush with the ground, to mark the location of the corner and was found to be:

2684.98 feet from the north quarter corner of Section 17

2649.82 feet from the east quarter corner of Section 18

The following ties were taken to the corner:

- a) on the north side of a plowed field
- b) nail and bottle cap, southwest side, 14" Boxelder, northwest, 37.84 feet
- c) nail and bottle cap, west side, 5" Boxelder, northeast, 30.60 feet
- d) nail and bottle cap, east side of only wooden fence post in east-west fence, north, 7.74 feet

2009 August, a thorough search in the DNR Division of Waters survey records and the DNR Division of Lands and Minerals survey records was made but no field notes or correspondence was found for the 1956 survey.

2009 October 13, the DNR Division of Lands and Minerals roved to the area of the corner with RTK GPS and found a 1 $\frac{1}{4}$ inch diameter by 14 inch long iron pipe, down 12 inches, and lying mostly horizontal. The end of the iron pipe that was formerly set in the ground was determined and was reset accordingly. Searched for and found the 1973 ties as follows:

- a) 20" Boxelder, northwest, 38 feet – no metal attraction on its southwest side
- b) 16" Boxelder, northeast, 31 feet – no metal attraction on its northeast side
- c) broken off wooden fence post in an east-west fence, with a nail and bottle cap on it, north, 8 feet

A ¾ inch by 24 inch rebar with a plastic cap stamped "MN DNR LS 17003" was set flush with the ground and in the center of the found up righted iron pipe and was found to be:

- a) 2684.78 feet (2653.86 feet –GLO) from the north quarter corner of Section 17
- b) 2652.83 feet from the east quarter corner of Section 18
- c) 5209.02 feet (5188.92 feet –GLO) from the northwest corner of Section 18
- d) 15.7 feet west of the northerly projection of a straight line from a PK nail found in the area of the southeast corner of Section 18 thru the east quarter corner of Section 18

2009 October 13, the DNR Division of Lands and Minerals dug a 12 foot east-west by 7 foot north-south by 2.5 deep hole (natural ground at a depth of 1 foot) with a backhoe in the area of the north 1/6 corner of the NW ¼ of Section 17 in search of an iron stake and concrete stone. No evidence of the iron stake or concrete stone were found in the excavation, only found a couple of field stones. The bottom of the excavation was scanned with an electronic metal detector but no metal attraction was obtained. The center of the excavation was on the center line of an east-west road and in line with a fence south and was found to be 1320 feet west of the north quarter corner of Section 17.

Analysis of the above information led the DNR Division of Lands and Minerals to conclude that the found iron pipe, which was set in 1973 on the southerly extension of a north-south fence which starts about 400 feet north of the area of the corner AND on the westerly extension of a line from the northeast corner of Section 17 thru the north quarter corner of Section 17 marks the practical location of the section corner.